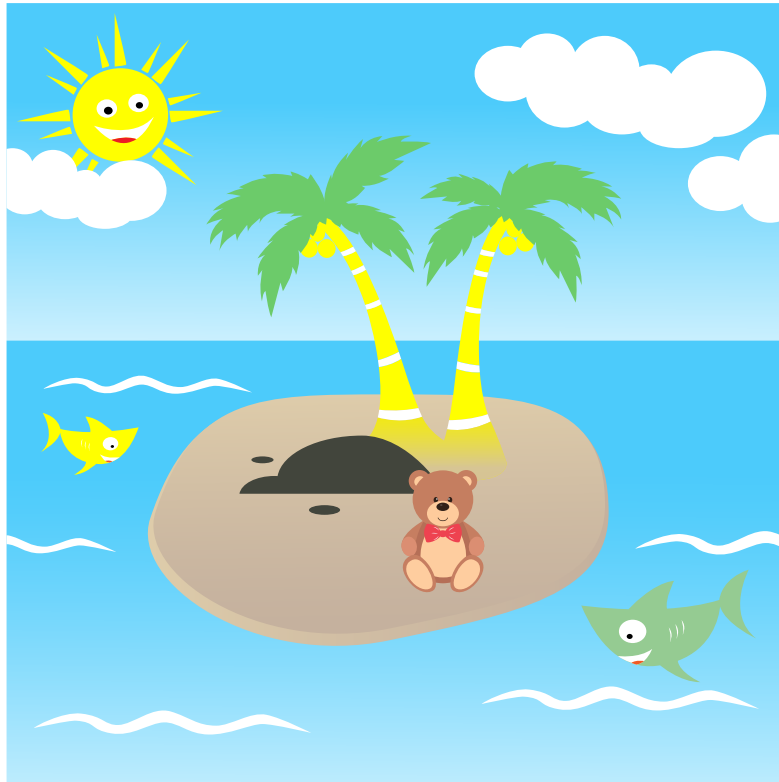


RESCUE MISSION

Your task:

Create an island in your garden or a large space indoors (you could use cushions, blankets or rope for this) and create an imaginary sea around it (again using ropes, blankets or similar). Place a teddy bear (or another soft toy) on the island and make sure that you cannot reach it from the other side of the imaginary sea!



**YOU MUST RESCUE THE
TEDDY BEAR!**

But...

**...you are not allowed to walk over to collect it.
What could you use / make to rescue the bear?**

