

Name: .....

Date:.....

Garden wildlife fact cards

<p>A red fox is a mammal. It has pointed ears and a bushy tail.</p> <p>A baby fox is called a cub and a female is known as a vixen.</p> <p>The male fox is called a dog. Foxes hunt at night.</p>	<p>A house mouse is a mammal. It has greyish fur and a tail of up to 10 cm long. It mainly eats grain, seeds and invertebrates.</p> <p>The house mouse emits a strong musky smell when disturbed.</p>
<p>A common frog is an amphibian. It moves with a springing leap. Its pattern and colours differ.</p> <p>The common frog has large black eyes flecked with brown. It likes to eat slugs, beetles, woodlice and snails.</p>	<p>A hedgehog is a mammal. It has a round, short body which is covered in spines.</p> <p>The hedgehog has long legs with five toes on each foot.</p> <p>Hedgehogs are nocturnal. They can run, climb and swim.</p> <p>The hedgehog eats invertebrates such as slugs, beetles and worms, but also birds' eggs.</p>
<p>A red squirrel is a mammal. It prefers to live alone unlike the grey squirrels.</p> <p>The red squirrel feeds on seeds in cones, fruit and berries, but will also eat nestlings and eggs.</p>	<p>A mole is a mammal. It has soft blackish grey fur and very large front paws.</p> <p>Moles are rarely seen above ground. They live in tunnels up to a metre deep.</p> <p>A mole likes to eat worms and insect larvae.</p>
<p>The common wall lizard is a reptile. It is 18-20 cm long.</p> <p>The colours of this lizard vary from green to grey to brown.</p> <p>The common wall lizard feeds on small invertebrates.</p>	<p>A magpie is a black and white bird with metallic blue-black wings and a long rounded tail.</p> <p>The magpie is an omnivore, feeding off seeds, eggs, nestlings and insects.</p>

Garden wildlife fact cards

<p>A garden bumble bee is an insect. It has a very long tongue which can be seen when it is feeding on flowers.</p>	<p>The common earwig is an insect of 10-15mm long with pincers. It is mainly vegetarian and very common in gardens.</p>
<p>An earthworm can grow up to 30cm long. It spends most of its time underground in tunnels. The earthworm eats vegetarian and animal particles from the soil.</p>	<p>The red admiral butterfly is an insect. It is brown with orange bars on its wings. It is common in flowery places. Adult butterflies feed on rotting fruit in autumn.</p>
<p>The garden spider is an insect. It has a white cross on its abdomen. The colours vary from yellow to brown. The garden spider spins its web and captures flies and other insects.</p>	<p>A robin is a bird with a red/orange breast. It has long thin legs. The robin feeds on insects and berries. It is very common in gardens and forest edges.</p>
<p>The seven spot ladybird is an insect. It is red with black spots. The adult ladybird and the larvae feed on aphids. Ladybirds huddle together in winter to keep warm.</p>	<p>The male blackbird is black with a yellow bill. The female is sooty brown. Blackbirds eat insects, worms, berries and fruit. They are commonly found in woodlands and parks.</p>

Who am I?

Use the animal fact cards to help you solve the following clues.

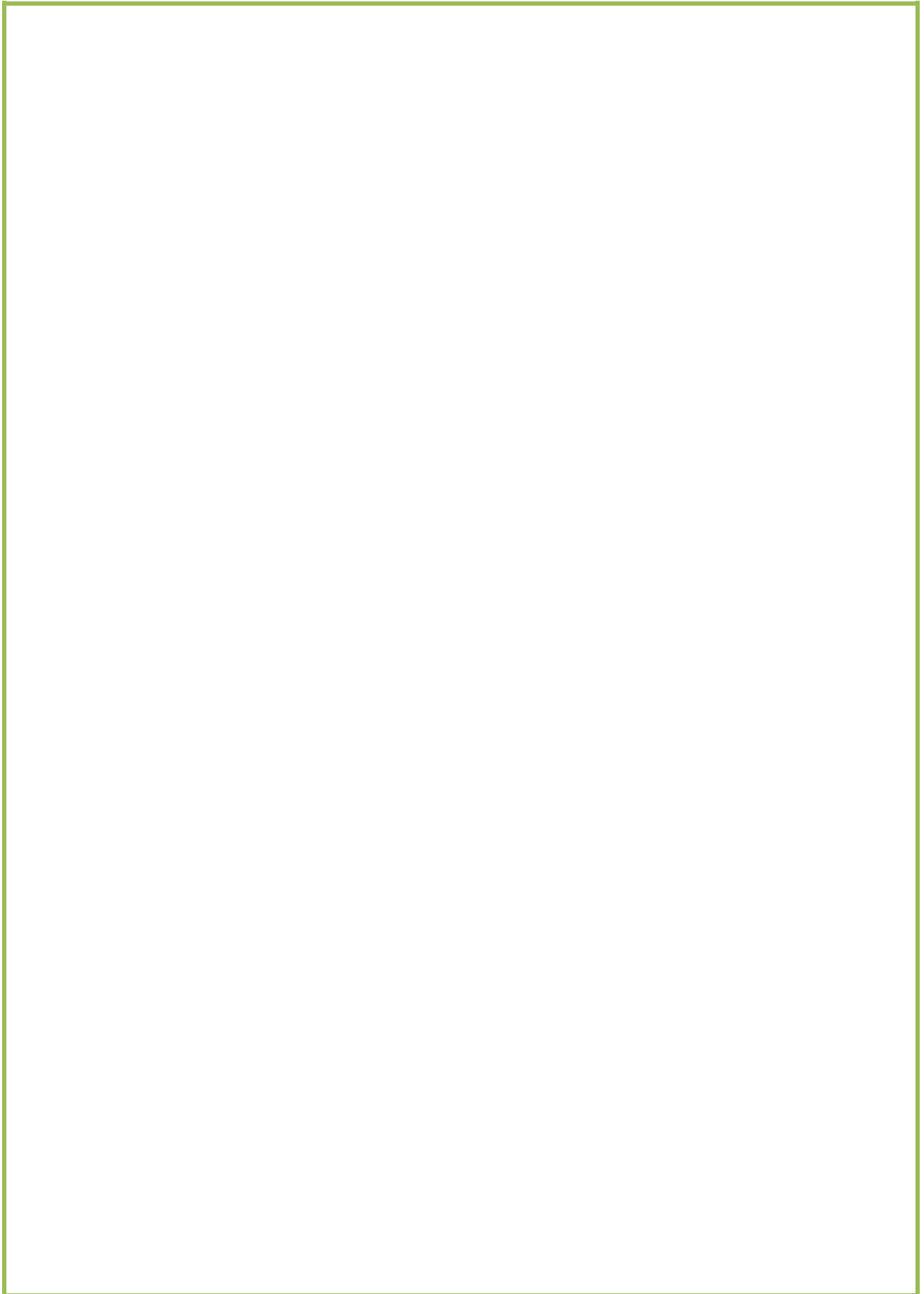
<p>I once could crawl but now I can fly.</p> <p>What am I?</p>	<p>I am red but sometimes grey. I eat insects and have a bushy tail.</p> <p>What am I?</p>
<p>I used to be a tadpole and then I changed. Now I can spring and leap.</p> <p>What am I?</p>	<p>I am an insect and often red. I have black spots and I can fly.</p> <p>What am I?</p>
<p>I feed on berries and insects and have an orangey red breast. I can fly.</p> <p>What am I?</p>	<p>I am a mammal with a very long tail. I have grey fur. I like to eat grain.</p> <p>What am I?</p>
<p>I have pointed ears and nose, and a bushy tail. I hunt at night. I will eat most things, but like rabbits and hens.</p> <p>What am I?</p>	<p>I am a yellow and black insect with a very long tongue. I feed on long-necked flowers.</p> <p>What am I?</p>

Look at the garden wildlife fact cards and organise into mammals, birds, insects, reptiles and amphibians.

List each underneath and draw a picture.

Mammals	Birds	Insects	Reptiles	Amphibians

Create your own garden adding wildlife and plants.



Write a description of your garden paying close attention to the wildlife and plants.

.....

.....

.....

.....

.....

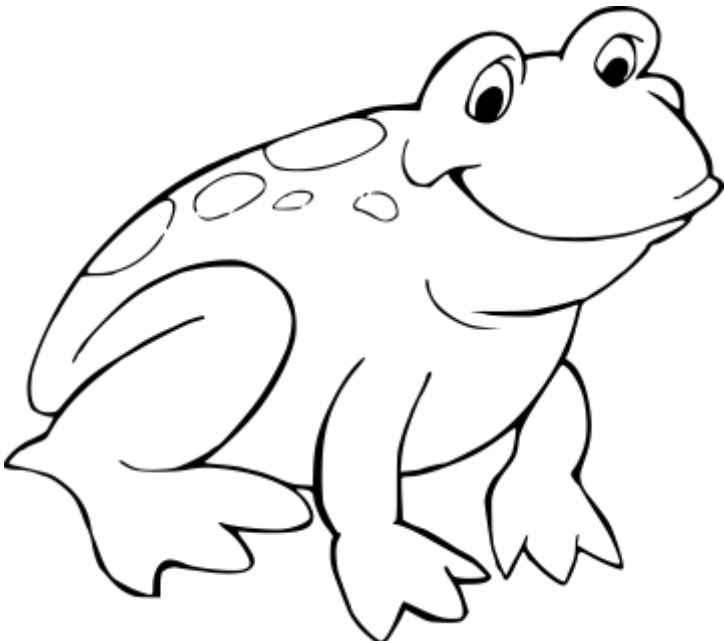
.....

.....

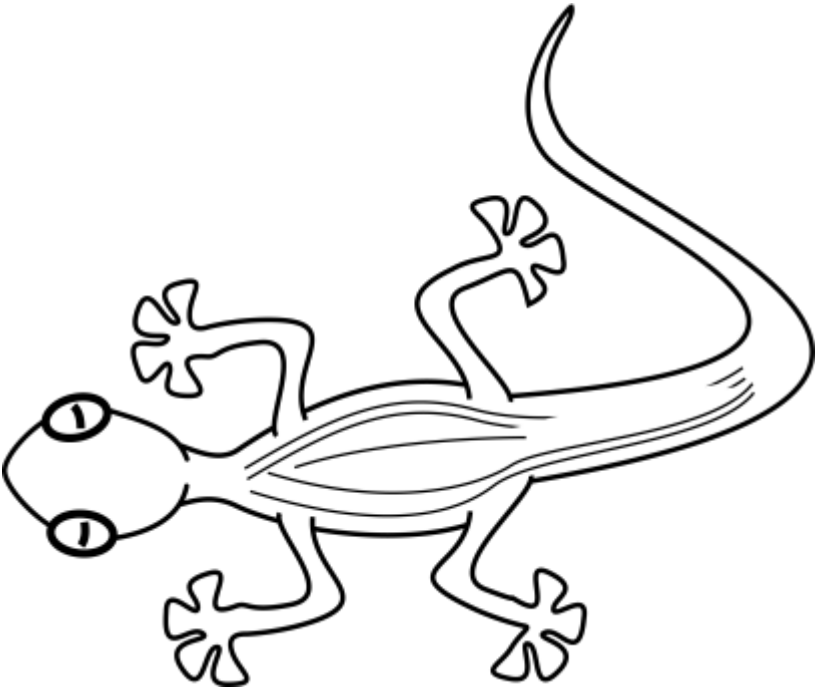
.....

.....

Colour and label the amphibian and reptile.

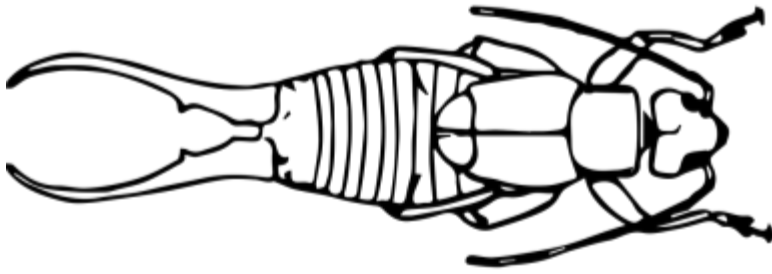


.....

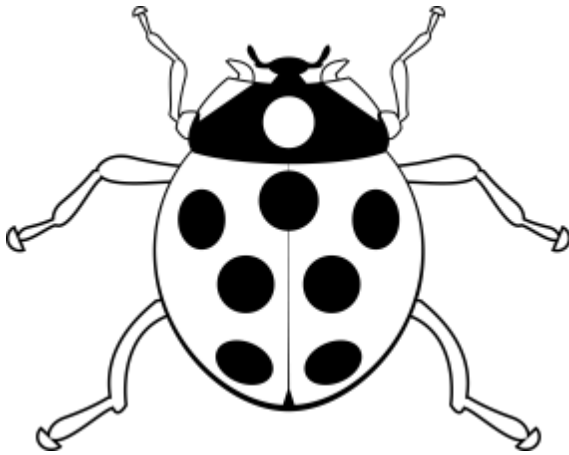


.....

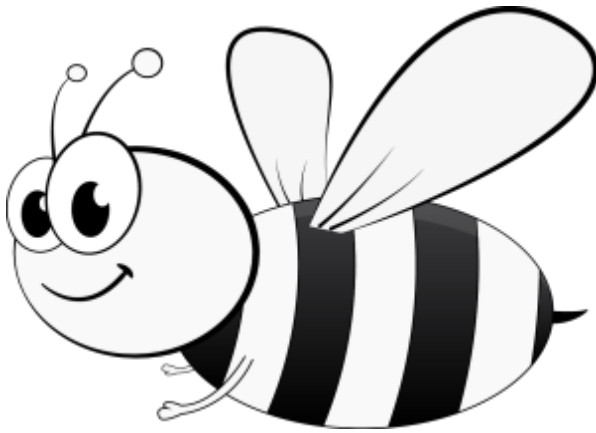
Colour and label the pictures of the insects.



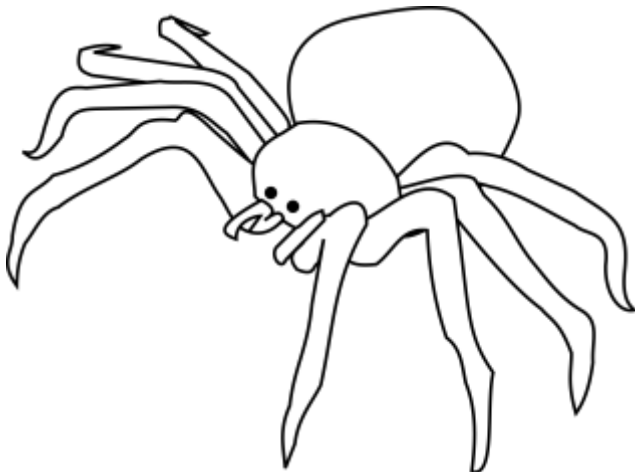
.....



.....



.....



.....



Colour and label the pictures of the mammals.



.....



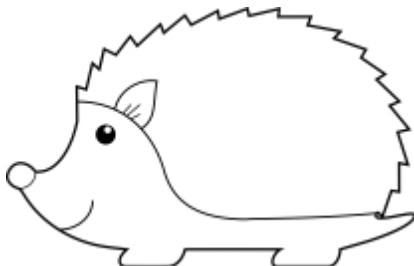
.....



.....



.....

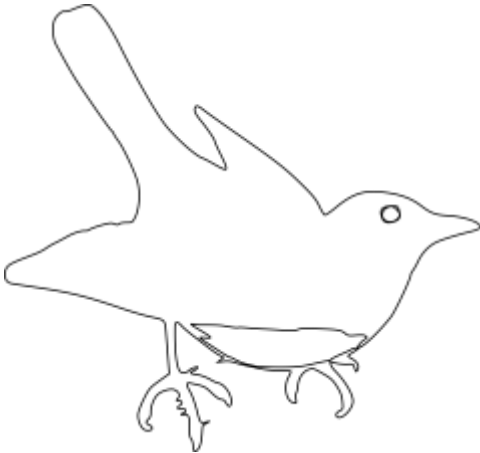


.....

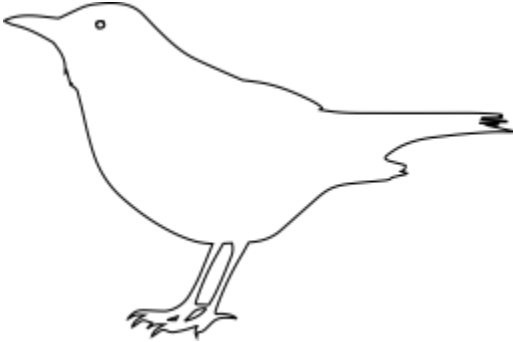
Colour the garden birds.



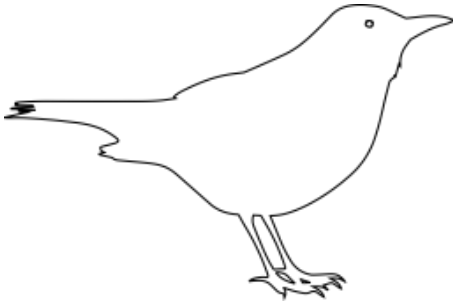
.....



.....

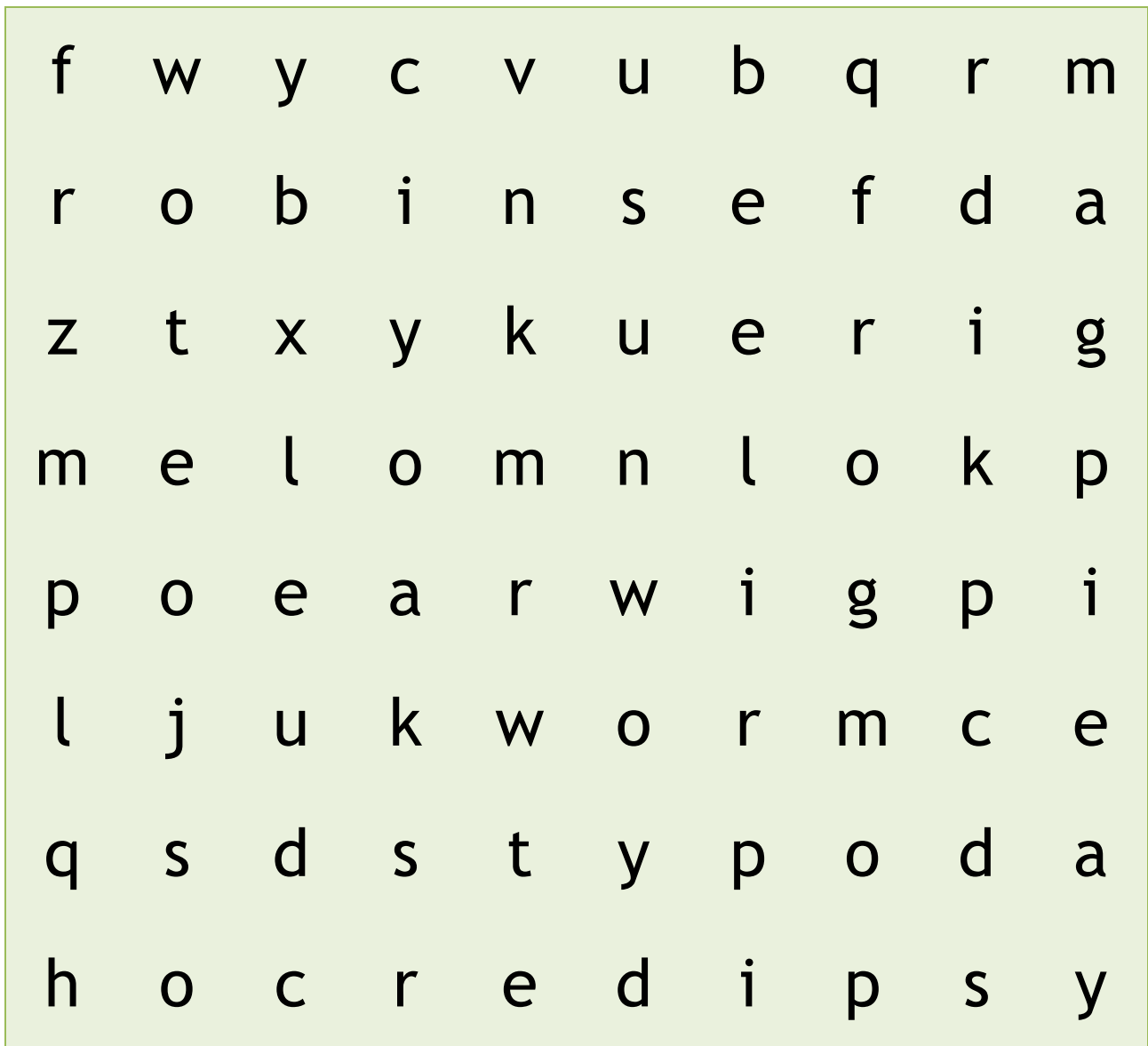


.....



.....

## Wildlife word search



Find the below common wildlife in the word search above.

fox	robin	mouse	spider	earwig
mole	bee	frog	worm	magpie